

Test Day Instructions for Online Simulated Maths Challenge (OSMC) - November 2024

Dear Parent,

This document shares some essential details of the Online Simulated Maths Challenge. We understand that your child may have taken this test previously, and you may be well acquainted with the procedures and rules. However, there have been a few updates compared to last year, and we suggest you read through this document carefully.

Test Structure

The Test format for Grades 1-6 is mentioned below:

No of questions	Marks per question	Total Marks	Time allotted
20	5	100	45 mins

The Test format for Grades 7-12 is mentioned below

Section	Number of questions	Marks per question	Question Number	Total Marks	Time allotted
1	12	2	1-12	24	60 mins
2	17	3	13-29	51	
3	5	5	30-34	25	
Total	34			100	

OSMC will be conducted across two days: **Saturday 23rd Nov, 12:00 am EST, to Sunday 24th Nov, 11:59 pm EST.** The student can take the Challenge anytime during this period. Once the test commences, it cannot be paused, and the test needs to be taken in one sitting.

Test Commencement

To commence the test, you need to follow the following steps.

Step 1) Login with the credentials mentioned in the email.

Step 2) Click on the exam [OSMC Grade # Nov 2024](#)

Step 3) The subsequent screen will have some basic information about the exam, already included in this document. Once you verify that the information is correct, click the button: 'I am ready to begin.'

Step 4) You will be asked permission to access the computer web camera. You need to **allow access** as this is a proctored exam.

The test will not commence if the above permission is not given. The test will also not commence if the requisite software or hardware, such as the web camera, is not functional.

Test Security

As you are aware, this is a video-proctored test. This means that the student's activities will be monitored during the test. You need to note the following points

1. For grades 1 to 6, we recommend that the parent/guardian sit next to the student to help them commence the test. Once the parent clicks on 'Allow permission to use camera,' they will have to move out and let the student start the test.
2. At the beginning of the test, please ensure that the student's live video footage is visible in the bottom left corner of the screen. If the camera does not work, we recommend trying a different browser or device to resolve the issue. If the camera is shut or not in action, your child will not be able to take the test, and even if they complete it, the test will not be considered valid.
3. The use of stationery such as pens, pencils, erasers, rulers and paper are permitted.
4. While eatables cannot be consumed, the student can drink water during the test.
5. The use of a calculator is strictly not permitted.
6. If the student changes tabs during the test, the test will be terminated.
7. If we detect that the student is speaking to someone or if anyone else comes within the camera frame, the test may terminate.
8. If the student reads from a different device hidden from the camera, his eye movements will be flagged, and the test may terminate. Note that we don't expect to capture facial and eye movements throughout the duration of the test. We understand that most students crouch over while solving questions.
9. If a student tampers with the video, it will be flagged, and the test will terminate.

We know these rules might seem a little intimidating. But while we want the student to focus on the test, we also need to ensure that the test is secure. As long as the student is left alone and doesn't engage in misconduct, it will all work fine.

Computer specifications

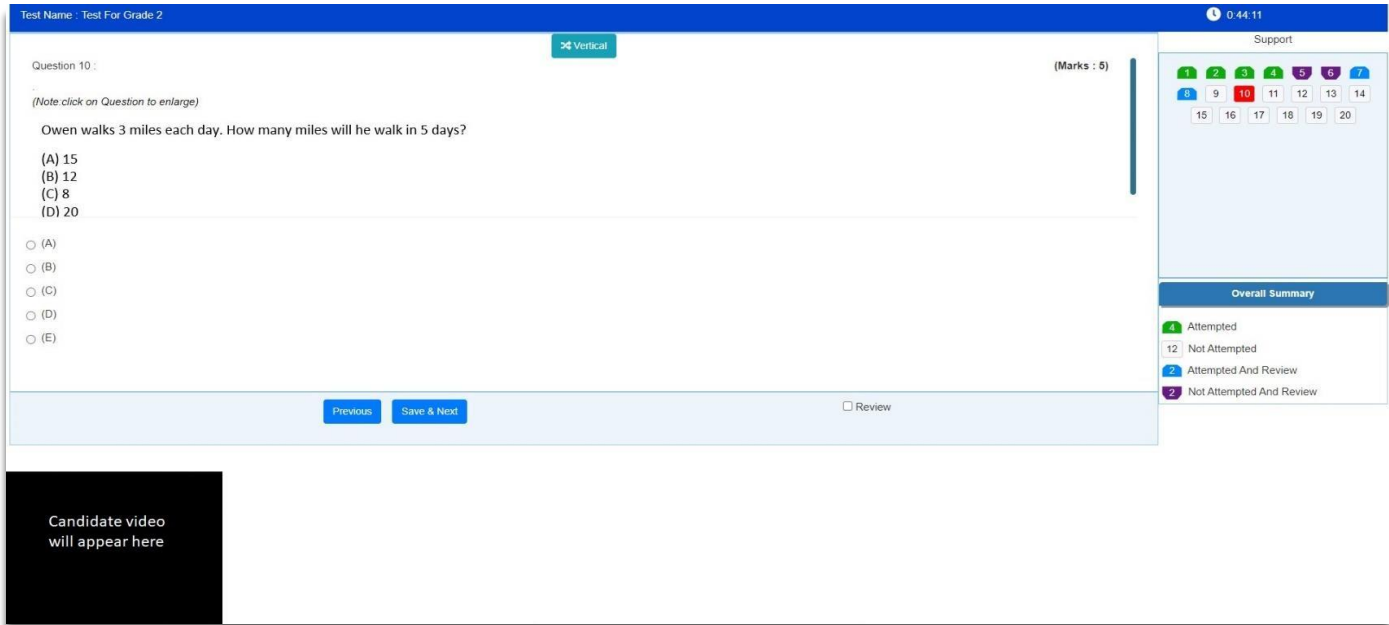
The test needs to be taken on a Laptop or Desktop computer in working condition with a good quality Camera. A minimum RAM of 4GB is required, and anything below that may affect the performance of the test platform. While the test works on most browsers, it works best with the latest version of Google Chrome Browser. Also, please note that Internet speed should be more than 1 Mbps. We recommend you close all other tabs on the screen before commencing the test.

Screen visibility

You can see below how the screen will look during the test. To enhance your viewing experience of the images below, you can utilize the following keyboard shortcuts:

For Windows: Press Ctrl + "+" to zoom in on this page.

For Mac OS: Press Command + "+" to zoom in on this page.



The student should note the following points.

1. You can move back and forth between questions.
2. The bottom row of the screen has a review option. This option flags questions you wish to revisit later. You can mark as many questions as you wish for later review.
3. You can mark both, an attempted question or an unattempted question for review.
4. The top right part of the screen depicts the status of the test. As you can see,
 - The first 4 have been attempted.
 - Question numbers 5 and 6 have not been attempted and flagged for later review.
 - Question numbers 7 and 8 have been attempted and flagged for later review
 - Question number 9 is unattempted
 - The student is currently on question 10 The number of reviews does not impact or alter the score.
5. The bottom left part of the screen will show your live feed.
6. The test ends when you click on 'Submit Test'. This button of 'Submit Test' will be visible when you reach the last question. Note that you are free to jump to that question when you wish to.
7. If you do not click on 'Submit Test', the test will terminate once the time runs out. There would be no warning indicators given. There is a timer on the top right of the screen. If the time runs out, the test will be submitted independently.

Enlarging Questions

Within the test platform, you will have the option to enlarge questions for better clarity and visibility. To do so, simply click on the question itself, indicated by a green tick. Refer to the example below for a demonstration. Avoid clicking on other areas, such as the 'lens' icon marked with a red cross, as it may cause the tab to change and could be interpreted as a security concern.

Question 13: (Marks : 5)

Note: (A: Click on the reload icon [🔄] if the question image is not properly loaded)
(B: Click on Question to enlarge)

An employee at the candle factory reported on the number of candles made each month. How many more candles did the factory make in June than in May?

(A)
 (B)
 (C)
 (D)

Overall Summary

- 0 Attempted
- 20 Not Attempted
- 0 Attempted and Reviewed
- 0 Not Attempted and Reviewed

The image below displays an example of an enlarged question. To close the enlarged view, simply click on the 'Close' icon located at the top right corner of the screen.

An employee at the candle factory reported on the number of candles made each month. How many more candles did the factory make in June than in May?

Candles made	
Month	Number of candles
May	4,172
June	6,681
July	8,203

(A) 2507
 (B) 2508
 (C) 2509
 (D) 2510

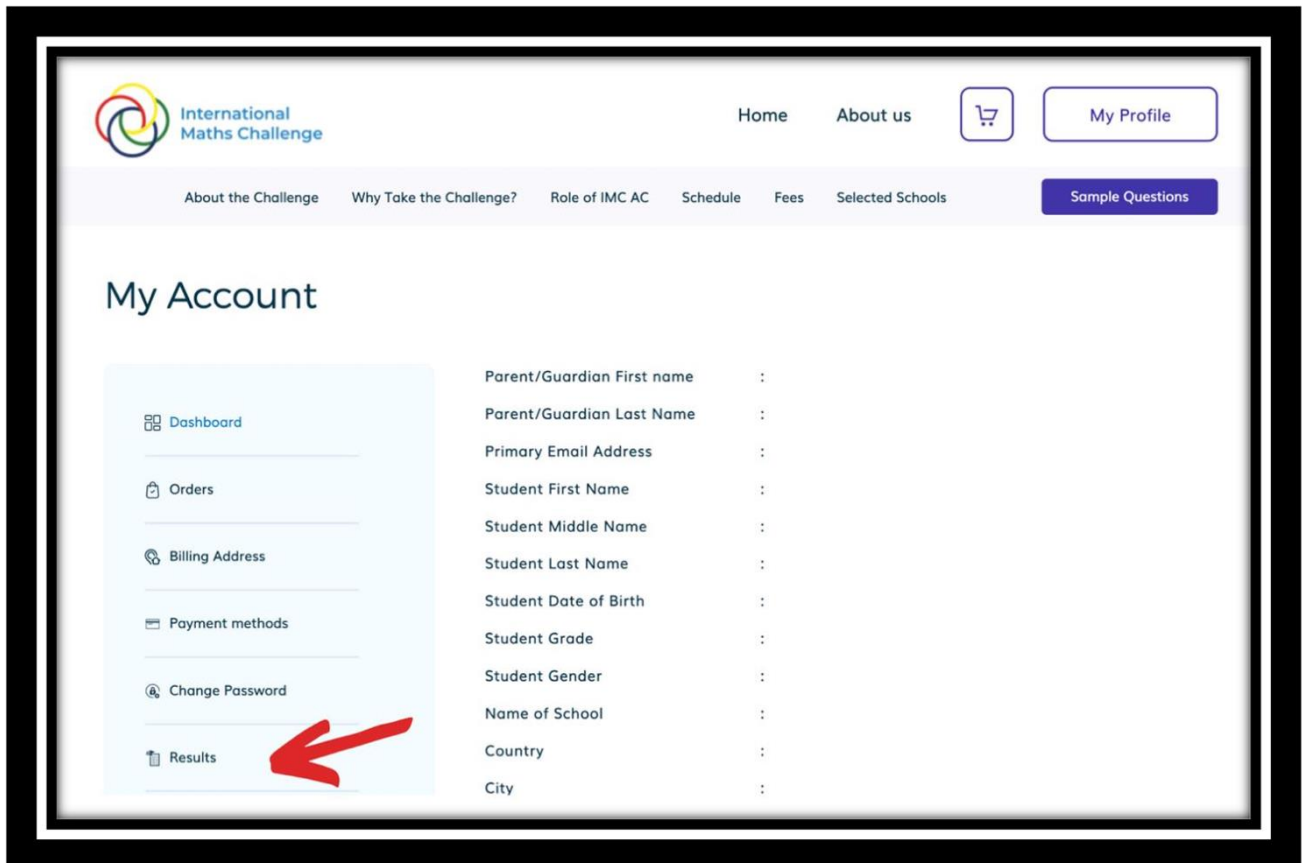
Close

0 Attempted and Reviewed
0 Not Attempted and Reviewed

This is a test of both speed and accuracy. In the past, students who have demonstrated the ability to promptly skip challenging questions and return to them later on completion of the easier ones have generally achieved higher performance in these tests.

Results and Score Reports

The results will be uploaded directly on your student portal on or before **5 pm (EST), December 1st 2024**.



Reminder – Kindly add www.international-maths-challenge.com to your safe sender list so that you do not miss out on important information.

Thank you for reading the instructions patiently. Good luck!

Regards

Support team at the International Maths Challenge